

# NOMAD Reporting

## NOMAD Reporting

- Efficient access to mainframe data including DB2, VSAM, IMS, IDMS, Teradata, NOMAD and QSAM
- Unsurpassed production reporting for the mainframe
- Ad hoc reporting tools
- Reporting access from the Web
- PDF, Chart, HTML, and XML output
- High performance option
- Extended VSAM support
- Oracle and SQL Server access on mid-tier platforms

### Mainframe Reporting

As mainframe systems have become smaller, faster, and more cost effective due to advances in technology over the past several years, the appeal of the mainframe has been renewed.

Leading analysts agree that approximately 80% of the enterprise data needed by decision makers still resides on these large servers – corporate America's mainframes – in DB2, VSAM, IMS, IDMS, Teradata, NOMAD and QSAM data sources. To be competitive in today's global marketplace, the key is speed and flexibility in the transformation of this data into information, and in delivering it to users worldwide.

### Managing Today's Reality

Managing this challenge means IT professionals are constantly on the lookout for ways to consolidate and streamline the use of all their resources – people, data, and machines – to respond faster and more efficiently.

With thorough evaluations and benchmarks as proof, NOMAD's powerful query and production reporting capabilities have made it the tool of choice in hundreds of Fortune 1000 companies around the world. NOMAD has been designed specifically for efficient data access. In test after test, it has proven to be the best solution for ad hoc and complex reporting with high volumes of data.

Using NOMAD's highly refined reporting technology, the time and effort required to produce high-quality, meaningful reports is dramatically less than with traditional SQL-based tools. The results are more useful, available faster, and enabled by a tool that uses less machine resources than other methods.

### Speed and Flexibility

NOMAD is designed to give you speed and flexibility for complex requests, combining, manipulating, and reporting on data stored in a variety of data sources. The use of table joins across dissimilar files poses no problem for NOMAD. All of its functionality for screening, sorting, formatting, calculations, and displaying can be applied to data in DB2, IMS, IDMS, Teradata and VSAM files. Information can then be presented to the user in a single report.

Central to NOMAD's flexibility is its language, which couples all the functionality expected in a 3GL with a robust nonprocedural language. No other tool can handle reporting requirements more quickly or easily than NOMAD.

## Productivity Gains Beyond the Norm

Data-centric in design, NOMAD stores all the information about your data and much of the reporting logic in a NOMAD Schema. This reduces the lines of code, greatly simplifies maintenance, and speeds the process of any conversion. Data formats and calculations described once in the Schema are automatically applied when reporting, so your data is correctly displayed by default without re-specification in a report request.

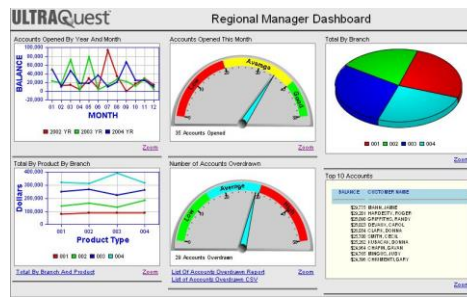
Your options for formatting are extensive. Columnar, free-format, PDF, chart, XML and spreadsheet-style are common requirements. With the power of NOMAD's language, a sophisticated report layout is frequently the default. If you've ever struggled with creating reports just the way you want them, you'll appreciate NOMAD's ease and flexibility for presenting information.

## Added Power for Decision Support

What about financial reporting? A large number of our customers depend on NOMAD for their financial applications. NOMAD's unique handling of arrays, time-series, and dates comes into powerful play when slicing and viewing financial data in a variety of ways. Mathematical functions - more than 140 of them - are predefined and can operate on any data item at any sort level. NOMAD's consolidation, aggregation, modeling, what-if, and goal-seek capabilities are as complete as you'll find anywhere. And all of NOMAD's decision-support capabilities are fully integrated into the product.

## UltraQuest: Web-based Reporting

In addition to QLIST, a 3270-style tool for ad hoc reporting, access to reports based on your legacy data is now possible from the Web with NOMAD's Web companion product, UltraQuest. Reports and queries can be quickly and easily created and executed through our Java-based reporting tool, UltraQuest. With just a Web browser, business users can now access that critical mainframe data for ad hoc decision making, all under the security, control, and efficiency required of such an environment.



*Dashboards can be built with UltraQuest to provide a high level view of business performance. Links within each cell are available to drill down to related detail.*

## Efficiency Is the Imperative

NOMAD is designed to bring out the best in your mainframe data. Interfaces to a variety of databases have been designed so NOMAD operates with maximum efficiency in its use of the data. Wherever possible, sorting, screening, and aggregations are passed to the database engine for processing. In many cases, NOMAD functionality enhances the engine, providing additional capabilities like complete support for outer joins, unlimited table joins, arrays, time series, null support, and enhanced referential integrity.

## Performance Where It Counts

Production reporting, with its many complex reports produced regularly from large volumes of data, generally carries a hefty price tag. By eliminating the repeated access of the same data, a recognized burden of typical production reporting, NOMAD One Pass can cut that price tag by as much as 80%. NOMAD One Pass processes multiple requests, and then produces reports and extracts as it makes a single pass through databases. Tested and retested in benchmarks at dozens of companies, One Pass consistently demonstrates significant savings in processing time and CPU cycles.

When accessing mainframe data from the desktop or the Web, NOMAD becomes a powerful server that can process the data on the host for optimal efficiency, returning only the desired results back to the user. With this built-in intelligence for maximizing performance, you can be sure that all of your users get the results they need as quickly and efficiently as possible.

## The Reality Is a Total Solution

NOMAD is your most complete solution for a full range of reporting needs. It is used in organizations worldwide to deliver the highest level of developer and user productivity. Time-tested and retested against a variety of reporting products, NOMAD has proven to be an efficient tool that can maximize the value of your mainframe data for decision-making.

To obtain more information, please contact **Select Business Solutions at 888-472-7347 or at [www.selectbs.com](http://www.selectbs.com).**

USA

Phone: +1.888.472.7347 (NA only)

+1.203.383.4600

Fax: +1.888.878.5178

E-Mail: [info@selectbs.com](mailto:info@selectbs.com)



UK

Phone: +44.20.3642.0532

E-Mail: [info@selectbs.com](mailto:info@selectbs.com)